

LEGEND

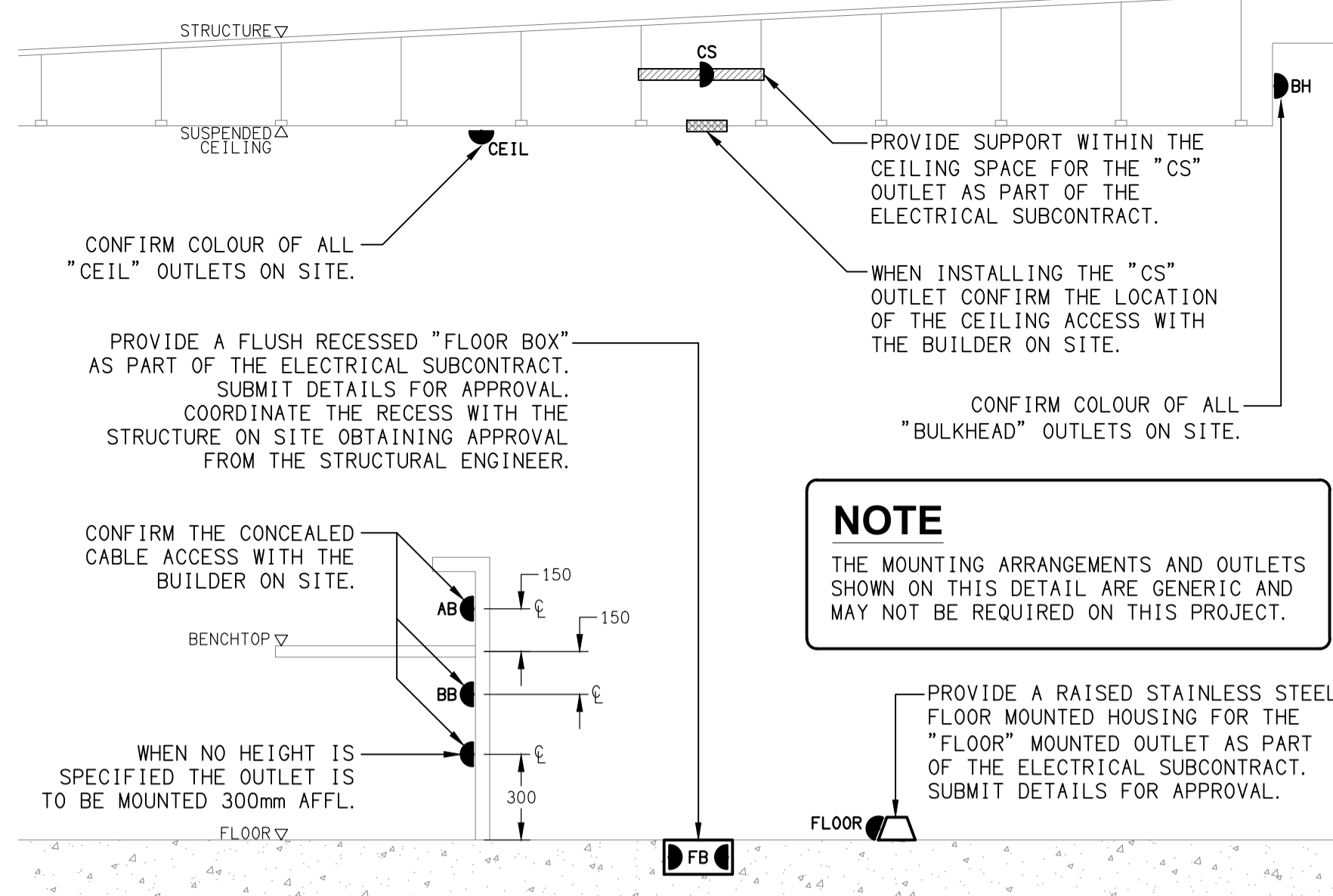
- ELECTRICAL SERVICES SWITCHBOARD.
- SWITCHBOARD / CONTROL PANEL NOT PROVIDED AS PART OF THE ELECTRICAL SUBCONTRACT.
- SINGLE POWER OUTLET.
- DOUBLE POWER OUTLET.
- DOUBLE POWER OUTLET C/W INTEGRAL USB CHARGERS.
- SPECIAL PURPOSE POWER OUTLET.
- SIGN OUTLET / CONNECTION.
- SINGLE PHASE ISOLATOR.
- THREE PHASE ISOLATOR.
- JUNCTION BOX.
- CONDUIT ROUTE.
- CABLE TRAY AS NOTED.
- ELECTRICAL PIT, TYPE AS NOTED.
- TELSTRA PIT.
- ELECTRICAL FLOOR BOX, TYPE AS NOTED.
- HAND DRYER CONNECTION.
- LIGHTING CONTROL SWITCH PANEL, TYPE AS NOTED.
- ONE-WAY LIGHT SWITCH.
- TWO-WAY LIGHT SWITCH.
- OCCUPANCY PRESENCE DETECTOR SWITCH.
- CIRCUIT LINE.
- SWITCH LINE.
- POWER CIRCUIT DESIGNATION. DENOTES DB AND CIRCUIT.
- LIGHTING CONTROL CHANNEL REFERENCE.
- MAIN DISTRIBUTION FRAME.
- ELECTRICAL EQUIPMENT AS NOTED.
- NBN NETWORK TERMINATION DEVICE.
- NBN PREMISES CONNECTION DEVICE.
- SUPPLY AUTHORITY CODE COMPLIANT LV MAXIMUM DEMAND TARIFF METER.
- METERING TEST BLOCK METER.
- CONTACTOR.
- GENERATION SIGNALLING DEVICE.
- DEMAND RESPONSE SITE CONTROLLER.
- MANUAL TRANSFER SWITCH.
- MAXIMUM DEMAND EV CTS.
- ELECTRIC VEHICLE CHARGING ISOLATION SWITCH.

LEGEND

- CIRCUIT BREAKER C/W SHORT TRIP.
- FUSE.
- SINGLE PHASE.
- THREE PHASE.
- CURRENT TRANSFORMER C/W REMOVABLE LINK.
- FUSE LINK.
- COMBINED FUSE SWITCH.
- CIRCUIT BREAKER.
- ISOLATOR.
- RESIDUAL CURRENT DEVICE.
- CONTACTOR - NORMALLY OPEN.
- CONTACTOR - NORMALLY CLOSED.
- REFER TO DETAIL NOTED FOR THE AREA SHOWN HATCHED. ADDITIONAL OUTLETS & FITTINGS MAY BE SHOWN ON DETAIL.
- E1: GENERAL LED EMERGENCY LIGHT.
- EX: EMERGENCY LED EXIT LIGHT.
- Lx: LIGHT FITTING C/W NON-MAINTAINED EMERGENCY BATTERY PACK. TYPE AS NOTED.
- L1: OVERHEAD CUPBOARD LED STRIP LIGHT.
- L2: 600 x 600 RECESSED T-BAR FLAT PLATE.
- L3: 600 x 600 RECESSED FLAT PLATE.
- L4: AMENITY RECESSED DOWNLIGHT.
- L5: RECESSED DOWNLIGHT.
- L6: RECESSED DOWNLIGHT.
- L7: RECESSED DOWNLIGHT.
- L8: RECESSED DOWNLIGHT.
- L9: RECESSED DOWNLIGHT.
- L10: 150W SUSPENDED HIGH BAY FITTING.
- L11: 1200 LONG IP65 BATTEN C/W EMERGENCY PACK.
- L12: SURFACE MOUNTED CAR PARK LIGHT C/W MOVEMENT SENSOR.
- L13: 3800 LONG RECESSED EXTRUSION FITTING.
- L14: 1200 LONG IP65 SURFACE MOUNTED BATTEN C/W MOVEMENT SENSOR.
- L15: 1200 LONG IP65 SURFACE MOUNTED BATTEN.
- L16: WALL MOUNTED CARPARK LIGHT.
- L17: 50W CARPARK LIGHT ON A 9m HIGH POLE.
- L18: 150W CARPARK LIGHT ON A 9m HIGH POLE.
- L19: RECESSED DOWNLIGHT.
- L20: 7000 LONG SURFACE MOUNTED EXTRUSION.
- L21: R0D SUSPENDED HIGH BAY FITTING.
- L22: 200W SUSPENDED HIGH BAY FITTING.

NOTE

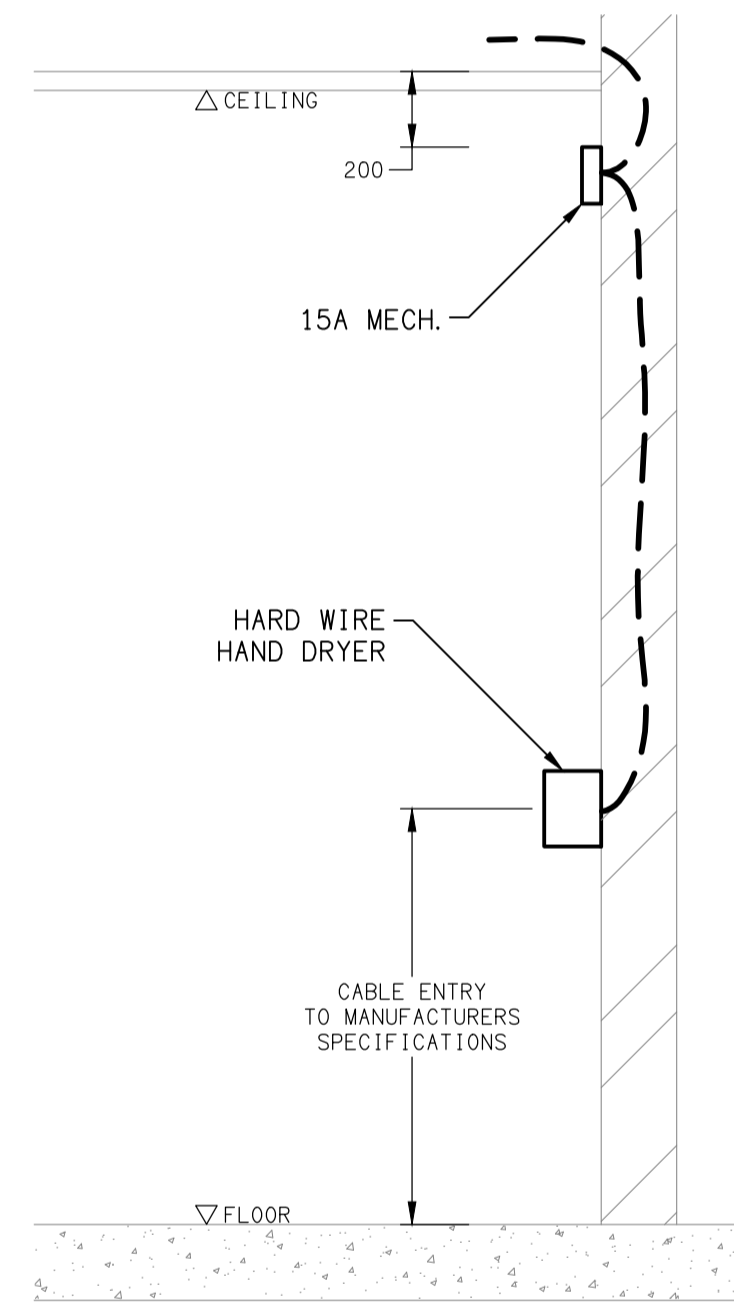
ALL ELECTRICAL PENETRATIONS THROUGH THE ROOF SHEETING ARE TO BE IN LINE WITH THE STRUCTURAL OR MECHANICAL SERVICES PENETRATIONS TO AVOID DEDICATED FLASHINGS FOR THE ELECTRICAL SERVICES.



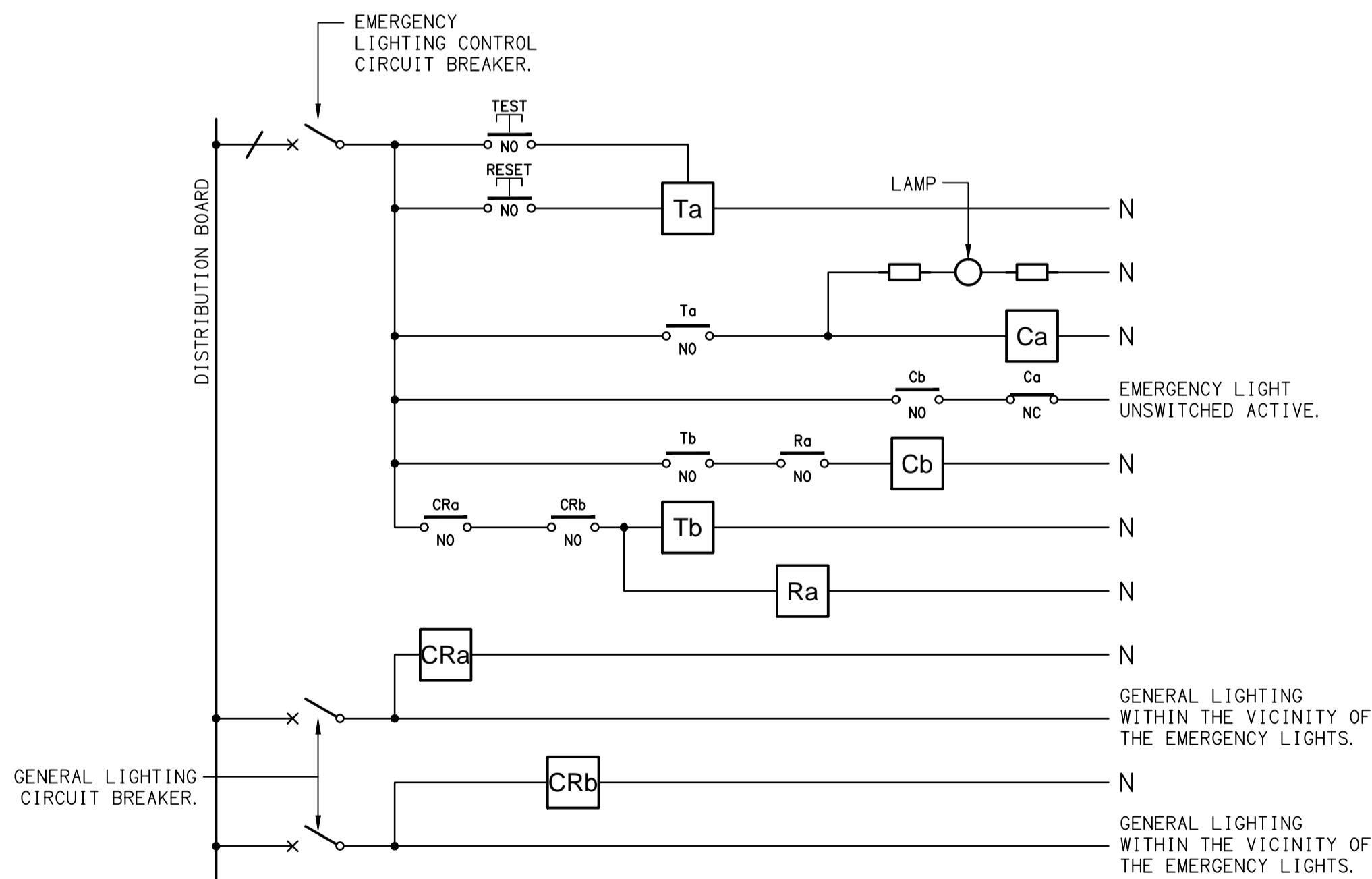
DETAIL
TYPICAL OUTLET MOUNTINGS
NOT TO SCALE

EQUIPMENT:

- TEST - TEST PUSH BUTTON MOUNTED ON THE DISTRIBUTION BOARD ESCUTCHEON.
- RESET - RESET PUSH BUTTON MOUNTED ON THE DISTRIBUTION BOARD ESCUTCHEON.
- LAMP - AMBER TEST INDICATING LAMP MOUNTED ON THE DISTRIBUTION BOARD ESCUTCHEON.
- Ta - ADJUSTABLE 0-3 HOUR TIMED RELAY.
- Tb - 15 MINUTE RUN-ON TIMER TO OPERATE UPON THE RETURN OF MAINS POWER.
- Cx - CONTACTOR x.
- CRx - CONTROL RELAY x.
- Rx - RELAY x.



DETAIL
HAND DRYER CONNECTION
NOT TO SCALE



SCHEMATIC
EMERGENCY LIGHTING
NOT TO SCALE

NOTES

1. THE EMERGENCY LIGHT UNSWITCHED ACTIVE / GENERAL LIGHTING SWITCHED ACTIVE CIRCUIT ARRANGEMENT AND CONTROL IS TYPICAL FOR ALL CIRCUITS SUPPLYING EMERGENCY LIGHTS.
2. PROVIDE ADDITIONAL CONTROL RELAYS (CRx) CONFIGURED AS PER CRa AND CRb FOR ALL ADDITIONAL LIGHTING CIRCUITS THAT SUPPLY LIGHTS IN THE VICINITY OF THE EMERGENCY LIGHTS.

E	80% DEVELOPED	24/02/2025
REV:	DESCRIPTION:	DATE:

DRAWING:
ELECTRICAL SERVICES
LEGEND & DETAILS

SCALE: NOT TO SCALE AT A1	PROJECT NO: C3294a	DRAWING NO: E01	REVISION: E
------------------------------	------------------------------	---------------------------	-----------------------

ELECTRICAL DESIGN GROUP BRISBANE
PTY LTD
ACN 092 710 793
TRADING AS:
ELECTRICAL DESIGN GROUP

THE COPYRIGHT OF THIS DRAWING
REMAINS THE PROPERTY OF THE
ELECTRICAL DESIGN GROUP.
USE FIGURED DIMENSIONS
IN PREFERENCE TO SCALE.
ALL DIMENSIONS TO BE
VERIFIED ONSITE.



Rohrig (Qld) Pty Ltd
ABN 67 093 753 970
QBSA LIC NO 740842
250 Abbotsford Road, Bowen Hills Qld 4006
PO Box 86 Albion DC Qld 4010
T+61 (7) 3257 4411 F+61 (7) 3257 2211
www.rohrig.com.au

ELECTRICAL DESIGN GROUP
ELECTRICAL BUILDING SERVICES CONSULTANTS
BRISBANE GOLD COAST

P.O. Box 15, Sherwood Q.4075
Phone: (07) 3278 4375
Email: brisbane@edg.net.au
Web: www.edg.net.au

PROJECT:
LLEWELLYN MOTORS SPRINGFIELD - LOT 32

LOT 32 AUGUSTA PARKWAY, AUGUSTINE HEIGHTS

SCALE: NOT TO SCALE AT A1	PROJECT NO: C3294a	DRAWING NO: E01	REVISION: E
------------------------------	------------------------------	---------------------------	-----------------------